

# HANGERS & DUCT SUPPORTS



**METU<sup>®</sup>**  
**STREIMER**  
for better ductwork

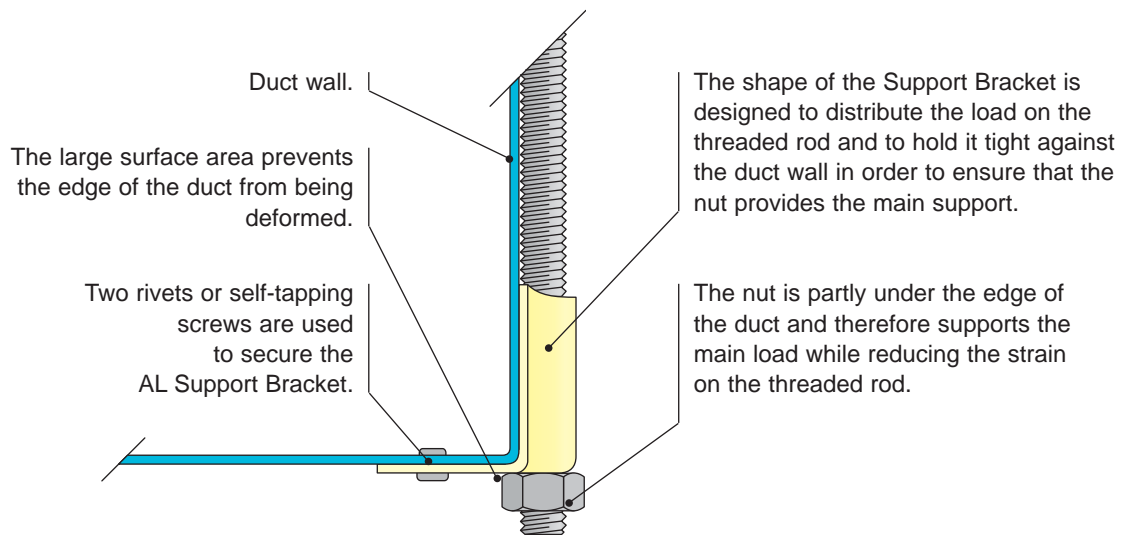
# HANGERS & DUCT SUPPORTS

## Contents:

- AL Support Brackets	Page	1
- MB Angle Brackets	Page	2
- BA Circular Duct Supports	Page	3
- SI Isolation Hangers	Page	4



- For the suspension of rectangular ductwork and/or equipment using 3/8 inch threaded rod.
- Sturdy construction with load-bearing capacity up to 300 lbs.
- Large supporting surface area prevents the edge of the duct from being deformed.
- Easy installation.



## DIMENSIONS AND LOAD-BEARING CAPACITY

The AL Support Brackets have a height of 1.5 inches, a width of 2 inches and an overall depth of 1.5 inches (approximately).

The load-bearing capacity is mainly limited to the strength of the ductwork, since the duct wall will buckle before the bracket deforms. With a duct wall thickness equal to 20 Gauge for instance the AL Support Bracket loading capacity is 300 pounds per bracket. The breaking load is three times higher.

## INSTALLATION

Press the AL Support Bracket tight against the duct wall and drill through the 3/16 inch guide holes to accommodate rivets or install self-tapping screws. The threaded rod can be positioned either before or after the fixing of the Support Bracket on the duct wall.

**Sound isolation:** If sound isolation is required, we recommend the use of SI Isolation Hangers.

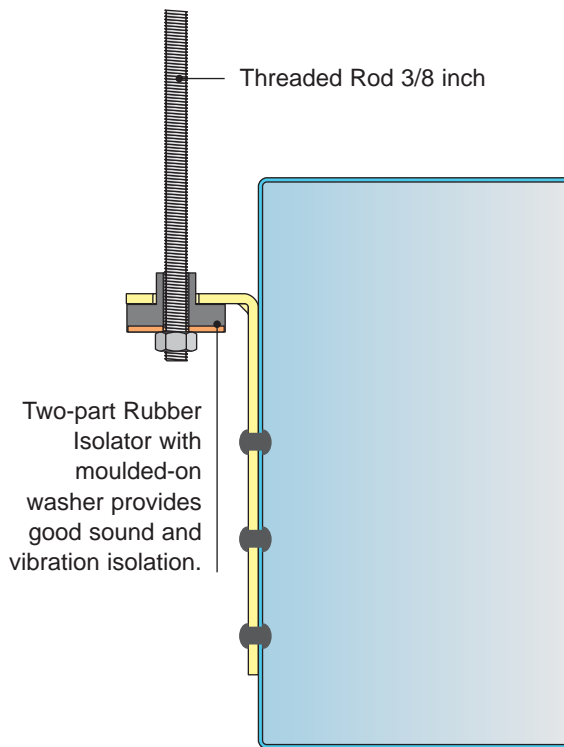
## DESIGNATION

Catalog No.	Description	for threaded rod Ø
AL-3/8GA	Galvanized AL Support Bracket	3/8"

# MB ANGLE BRACKETS

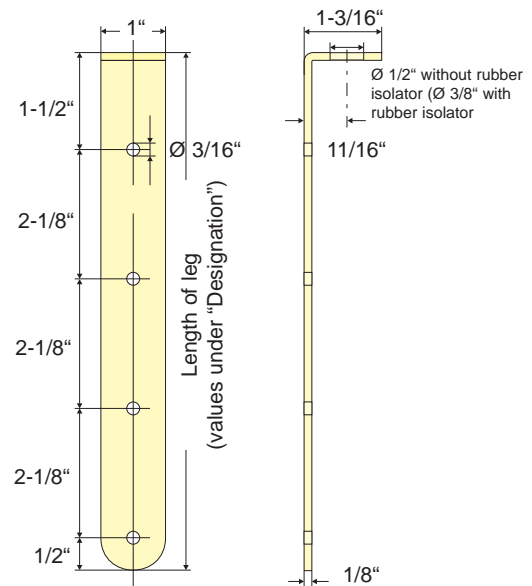


- Rugged 1/8 inch galvanized steel brackets.
- Used for the suspension of rectangular ductwork and equipment.
- Available in three different lengths to accommodate varying load requirements.
- The included Rubber Isolator provides good sound and vibration isolation.



## DIMENSIONS

MB Angle Brackets  
(data in inches)



## DESIGNATION AND LOAD-BEARING CAPACITY

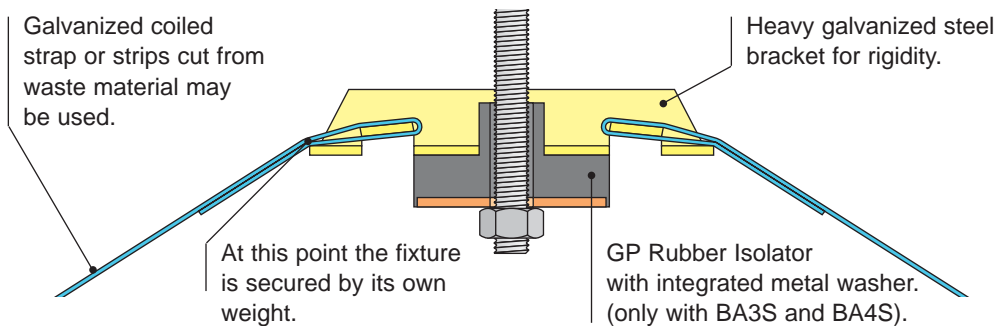
SKU	Catalog No.	Isolated with	Length of leg	No. of holes	Loading capacity
F06V-1001	MB-3/8GA-4	Rubber Isolator	4 Inches	3	260 lbs*
F06V-1002	MB-3/8GA-6	Rubber Isolator	6 Inches	3	320 lbs*
F06V-1003	MB-3/8GA-8	Rubber Isolator	8 Inches	4	420 lbs*

\* The indicated maximum load-bearing capacity is dependent upon use of #10 screws for fastening into minimum 22 gauge material for the 260 lb. rating, 20 gauge material for the 320 lb. rating and 18 gauge material for the 420 lb. rating.

# BA CIRCULAR DUCT SUPPORTS



- For the suspension of circular ductwork using 3/8 inch threaded rod.
- Standard 1-inch hanger strap encircles the duct.
- A press-formed steel bracket joins the two ends of the steel strap and provides a suspension point for the threaded rod.
- The steel strap is hand-formed into the bracket, requires no tools and is self-locking.
- High load-bearing capacity.

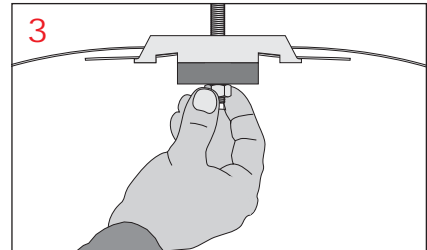
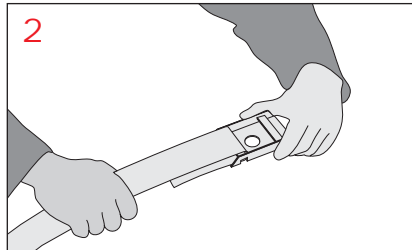
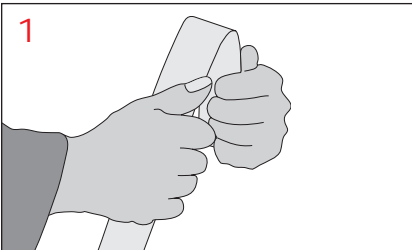


## INSTALLATION

Both ends of the strap are bent over approximately 1-2 inches. Be sure to protect your hands with gloves!

Hook the ends through the slots in the bracket.

Suspend the assembly from a threaded rod.



## DESIGNATION AND FIELD OF APPLICATION

SKU	Catalog No.	Description
F09A-1001	BA3-1-3/8GA	Galvanized BA Support Bracket for 1" strap and 3/8" rod
F09V-1004	BA3S-1-3/8GA	Galvanized BA Support Bracket with Isolator for 1" strap and 3/8" rod
F09A-1002	BA4-1.5-/38GA	Galvanized BA Support Bracket for 1.5" strap and 3/8" rod
F09V-1005	BA4S-1.5-3/8GA	Galvanized BA Support Bracket with Isolator for 1.5" strap and 3/8" rod
F09A-1003	BA5-2-3/8GA	Galvanized BA Support Bracket with Isolator for 2" strap and 3/8" rod
F09V-1006	BA5S-2-1/2GA	Galvanized BA Support Bracket with Isolator for 2" strap and 1/2" rod

\*The indicated maximum load-bearing capacity has a breaking load of approximately three times higher.

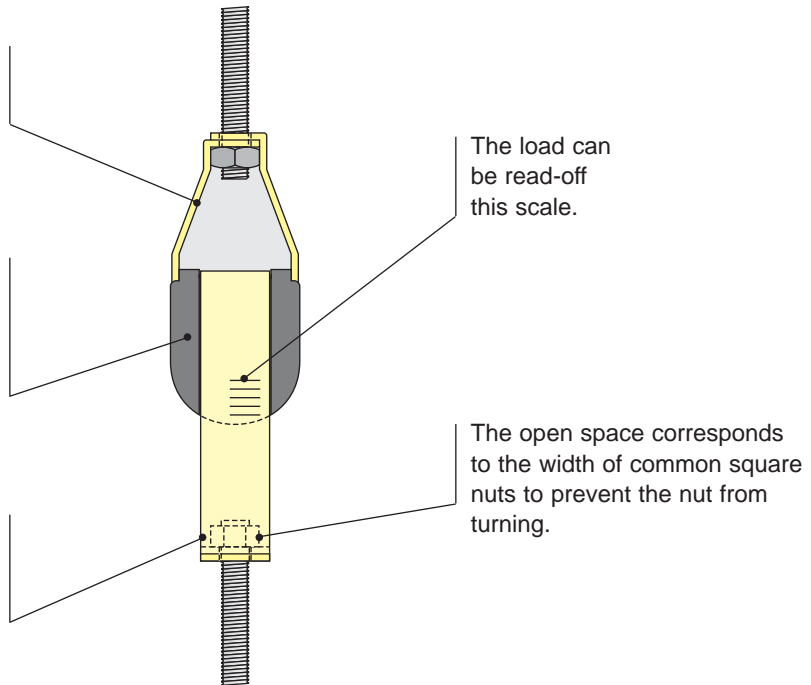


- For the sound isolated suspension of ductwork and equipment using 1/4", 3/8" and 1/2" threaded rods.
- A rubber isolator is placed between two 12 gauge tension brackets eliminating the transmission of sound and vibrations.
- Available in three different sizes to accommodate varying load requirements.
- Built-in scale allows actual load to be read.

The 12 gauge tension brackets have a much greater load-bearing capacity than the corresponding threaded rods.

The rubber isolator prevents vibrations from being transmitted.

The dimension on the outside corresponds to a standard open-ended wrench.



The load can be read-off this scale.

The open space corresponds to the width of common square nuts to prevent the nut from turning.

## LOAD-BEARING CAPACITY AND DIMENSIONS

Type	Loading capacity*	Threaded rod	Overall length	max. width	Rubber thickness
SI-1/4"	880 lbs	1/4"	5-1/2"	1-9/16" x 1-9/16"	1-3/4"
SI-3/8"	1100 lbs	3/8"	5-7/8"	1-3/4" x 1-3/4"	2"
SI-1/2"	1320 lbs	1/2"	6-1/4"	2" x 2"	2-3/16"

\* Loading capacity is limited to rating of threaded rod being used.

## DESIGNATION

SKU	Catalog No.	Description
F02V-1001	SI-1/4"	1/4" Isolator
F02V-1002	SI-3/8"	3/8" Isolator
F02V-1003	SI-1/2"	1/2" Isolator

**METU<sup>®</sup>**  
***STREIMER***  
for better ductwork

Exclusively manufactured and distributed in the United States through;

**METU-STREIMER<sup>®</sup>**

740 North Knott Street • Portland, Oregon 97227-2099

Phone: 503-943-6043 • Fax: 503-288-3327

Email: [info@metu-streimer.com](mailto:info@metu-streimer.com)

**[www.metu-streimer.com](http://www.metu-streimer.com)**